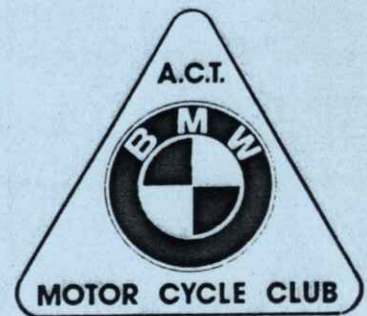


MONTHLY
JOURNAL
OF THE



P.O. BOX 1042,
WODEN
A.C.T. 2606

COMMITTEE

PRESIDENT :- MIKE HOUSTON (CARETAKER) PH. 889609 (H)
VICE PRESIDENT :- MIKE HOUSTON PH. 889609 (H)
SECRETARY :- GRAEME CAMERON (CARETAKER) PH. 887044 (H) 655826 (W)
TREASURER :- URSULA STROTMANN PH. 864057 (H)
TOURING SECRETARY :- BOB RUMSEY PH. 919329 (H) 733777 (W)
SOCIAL SECRETARY :- FRANK MILLWOOD PH. 957403 (H) 633799 (W)
EDITOR :- JENNI COLE PH. 816559 (H) 887508 (W)

LIBRARIAN :- FRANK MILLWOOD
TOOLS OFFICER :- FRANK MILLWOOD

CLUB ACTIVITIES

GENERAL MEETINGS SECOND MONDAY OF THE MONTH FROM 7.45pm.
ROYALS RUGBY FOOTBALL CLUB, WESTON.
CLUB RUNS FIRST WEEKEND OF THE MONTH (SATURDAY OR SUNDAY)
MEET AT PAUL BROGAN'S BMW, DUNDAS COURT, PHILLIP.
SOCIAL EVENTS AS ARRANGED. WATCH "MINUTES" & "WHAT'S ON" PAGES.
KOSCIUSKO RALLY FIRST WEEKEND IN OCTOBER.
KOSCIUSKO NATIONAL PARK, GEEHI HUT CAMPSITE.

MEMBERSHIP FEES SINGLE - \$10 JOINT - \$12 ASSOCIATE - \$10 / \$12

DISCOUNTS

PAUL BROGAN BMW
WESTON MOTORCYCLES
65 DUNDAS COURT
PHILLIP. PH. 851944
HRS - MON/FRI - 8.30 - 5.30
SAT - 8.30 - 3.00

PADDY PALLIN
46 NORTHBOURNE AVE
CIVIC. PH. 478949
(Available on purchases
totalling over \$300)

GENGE MOTORCYCLES
7 LONSDALE STREET
BRADDON. PH.497923

JOE'S MOTORCYCLE WRECKERS
UNIT 10, 3 WILUNA STREET
FYSHWICK. PH. 806703

PLEASE SHOW YOUR MEMBERSHIP CARD

FRONT COVER :-

WHATSON

- FEB 15 - 16 Swamp Rally near Ryleston, NSW.
Dead Centre Rally, Donald, VIC.
Gold Diggers Rally, near Tamworth, NSW.
- FEB 16 SOCIAL RUN, afternoon tea, meet at Cupacumbalong,
Tharwa, at 2.30pm.
- FEB 16 Wheels '86 Exhibition, Braddon football ground.
- MAR 1 - 2 Ellenborough Falls Rally, near Taree, NSW.
Tas Rally, Tasmania.
- MAR 1 - 2 CLUB RUN, Burrinjuck Dam, camping grounds,
meet Sat. midday at Paul Brogan's, Dundas Court,
Phillip.
- MAR 8 - 9 Mother Hardy's Rally, near Maffra, VIC.
- MAR 10 ANNUAL GENERAL MEETING - Royals Rugby Football Club,
7.45pm. Financial members attendance is essential
for election of new committee and winding up of
Club business for 1985.
- MAR 15 - 16 Old Tom Rally, near Eden, NSW.
Coastal Rally, near Taree, NSW.
- MAR 28 - 31 Australian Grand Prix races at Mt Panorama, Bathurst.
Bathurst Easter Rally, 21km from Mt Panorama.
Cane Toad Rally, near Mackay, QLD.
- APR 5 &/or6 CLUB RUN, to be advised.
- APR 13 VOLLEYBALL rematch against Ducati Club, details T.B.A
- APR 14 GENERAL MEETING - Royals Rugby Football Club, Weston.
7.45pm.
- APR 25 - 27 BMW Rally, in the Grampians National Park, VIC
(a beautiful area).

NOTE : CLUB FEES MUST BE PAID BEFORE THE AGM ON MARCH 10.

*Good travellers do not know where they are going to,
perfect travellers do not know where they came from.*

MINUTES OF GENERAL MEETING

10 FEBRUARY 1986

OPENED : 8.05pm

VENUE : ROYALS RUGBY FOOTBALL CLUB, WESTON.

APOLOGIES: P. Oliver, B. Searl, B. Blemings, A. Grant, I Chown,
I. Speed, P. Hempel.

PRESENT : 20 MEMBERS

Nil VISITORS

NEW MEMBERS: Nil

MINUTES of previous General Meeting accepted. Moved by J. Hahn

Seconded by F. Gilchrist

CORRESPONDENCE

OUT : Letter to 'Royals' stating continuing requirement for meeting room.

IN : • Club Newsletters -

- Letter from 'The Motorcyclist's Rally, Race & Function Guide' offering advertisement space in next issue - cost \$50 - offer rejected by vote.
- Letter from 'Council of ACT Motor Clubs Inc.' containing their general business and info. on "Wheels '86".
- Offer of tickets in BMW raffle - run by BMW MCC of VIC - \$5 - multiple prizes - two books of 20 ordered for sale to members.

PAST EVENTS REPORTS Lake George Run by Frank, Charlottes Pass Run by Bob.

BUSINESS : • Club votes Ron Quin to chair AGM.

- Bob gave rundown on BMW voting requirements (members must be financial, prior to AGM, to vote or stand for nomination)
- Club runs to be advertised at Paul Brogan BMW - TBA
- Departure point for Club Runs now "Paul Brogan BMW".
- Shop hrs for Paul Brogan BMW - Sat 8.30 - 3.00
Mon - Fri - 8.30 - 5.30
- CDDC verbally accept Frank's idea of inter-club debate, topic - BMW owners defend Ducati's / Ducati owners defend BMWs.
- Verbal challenge from 4 Owner's Club to a Volley Ball game.
- Club finances - Fran & Warren Gilchrist to make another 'CT-18' purchase (\$48 for 20kgs) for resale to members.

Special Note : Werner & Ursula have officially resigned from Club - Ursula has kindly agreed to defer her resignation until after the Treasurer's audited report and handover at the AGM.

NEXT MEETING : 10 March 1986 - Annual General Meeting

NEXT RUN : 1 & 2 March - Burrinjuck Dam (see What's On)

G. CAMERON

11/ 2/ 86

PREPARING TO RACE AT BATHURST '86

Easter will have all the answers !!

What chance does a BMW K100RS have in the Arai 500 Endurance Race against the assorted sports stable from Japan, the hot Ducatis of Mssrs Gowanlock and Brown and the odd Guzzi, Laverda and maybe even a Harley again like last year ?

It all started at the 'Statesman', over a cold ale, Robbo, B.C and the author discussing the previous weekends quick run over the mountains and all agreed that the BM would do alright at Bathurst with it's strong top end performance and excellent high speed stability.

The BM and FZ, also entered for Bathurst, have similar top end attainable speeds on the flat, although the Yamaha, like the GPZ 900 has an acceleration edge in high speed country with fifth and sixth gears available against the BM's fifth only. But this handicap can be offset by the BM's superior top speed stability if the rider is prepared to exploit it.

The ACU reports that ours will be the only Bavarian machine running, so it should be a good talking point for the "Mountain" devotees. We will also be creating some racing history for both BMW & Australia as it will be the first K series machine to be raced in this country.

Consequently some of it's capabilities are unknown quantities; the range of the 22 litre tank at racing speeds, will it do one and a half hours or will two fuel stops be necessary. What about tyre wear ? Will the rear Pirelli Silver Dot last the distance or will a wheel change be required ? And of course the crucial question, will it stay together (and upright) for 500kms ? Statistics show the attrition rate accounts for more than half of the field in these 500km Arai Endurance Races.

Paul Brogan and his boys at Paul Brogan BMW continue to give me every assistance both with the BM and the FZ and both machines will be on display in Paul's new shop in Dundas Court, Phillip during the week preceding Easter.

Bob Rumsey, our very own Touring Secretary is also assisting with a little specialised electronic tuning.

The questions posed in this report and many other such questions will be explored further in my next report on "Preparing to Race at Bathurst '86".

Mike Houston
(Rider)

MARCH CLUB RUN

MARCH 1 & 2 MEETING AT PAUL BROGAN BMW, DUNDAS COURT, PHILLIP AT MIDDAY. THEN TRAVELLING ONTO

BURRINJUCK DAM CAMPING GROUNDS. SO, BRING ALONG THE FISHING LINE.

A short note from the Editor :

Navy

I've been told that 2 of our Club members will be leaving us shortly both have been posted elsewhere, Gary Colcott to Darwin & Phillip Le Couteur to Nowra. Hope that both of you keep biking.

CLASSIFIEDS

FOR SALE

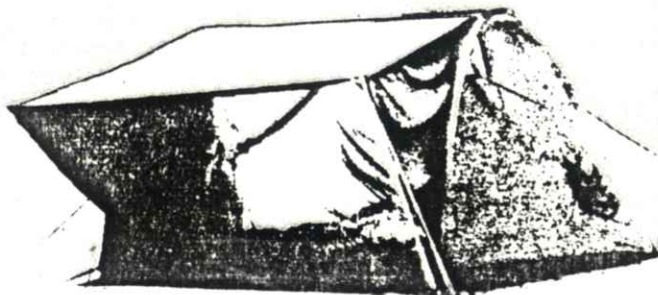
CT-18 Truck Wash - great for bikes, available from Fran & Warren. Sold in 4 litre lots, will make up to 40 litres.
 \$10 (H) 881462

CLUB T-SHIRTS (Bond's cotton) orders taken, Bob Rumsey
 \$7 (H) 919329

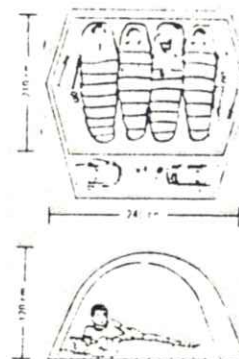
FAIRING, white Lazer, suit BMW fitment, Graeme Cameron
 \$80 (H) 887044

BMW R90S, 1975 model
 \$1500 o.n.o. (H) 816559

TENT - Faljvoven - 4 person



- .Large entrance vestibule (lots of room for bikers gear).
- .Used only twice
- .Internal insect screen
- .Aluminium poles



Haggling starts around \$285

Ring Bill Brown
 454493(W) 547220 (H)

WANTED

1 ladies and 1 gents 10 speed bicycle - Warren & Fran (H) 881462

PHOTOGRAPHS - If you have any photographs of people or events concerned with the Club, especially in its earlier days, they would be gratefully accepted for the Club Photo Album to be enjoyed by all. Information about who and where would be appreciated or even a short story accompanying the photo could be put in the magazine. If you have anything, see me at the meetings or contact me : Jeanette Hahn 888126 or P.O. Box 25, Weston 2611.

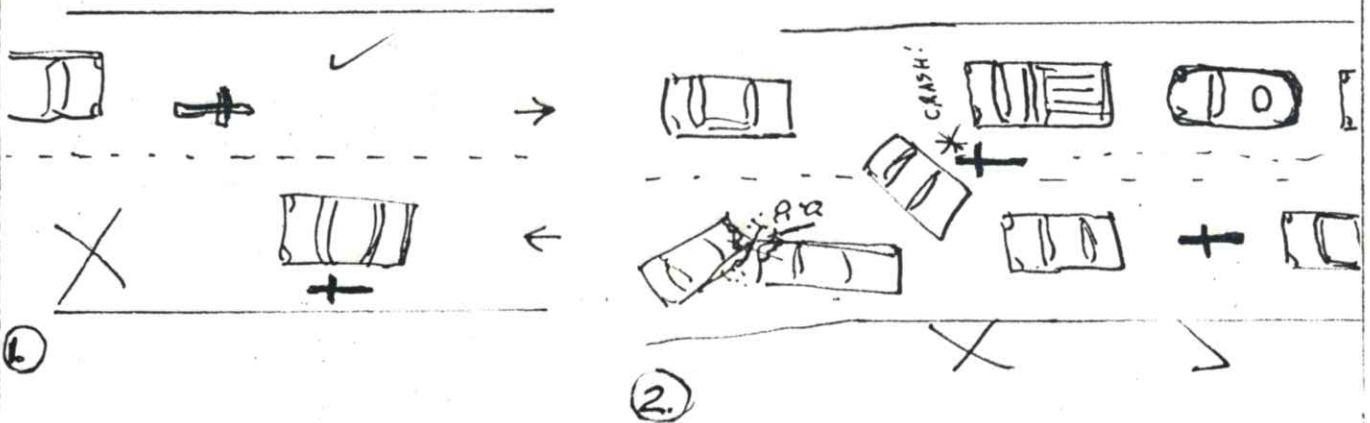
PAUL BROGAN BMW

SOME MORE THOUGHTS ON ROAD SAFETY

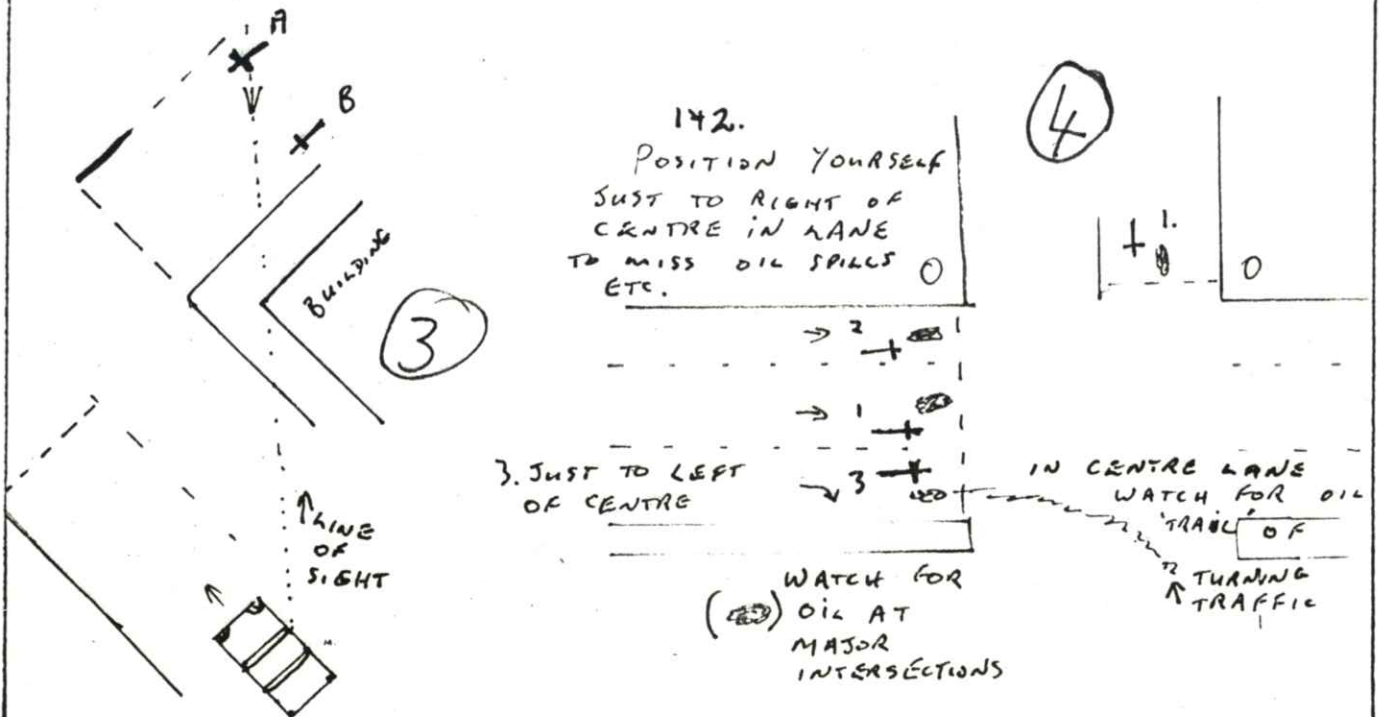
Last month we looked at some aspects of road safety as it applied to motor cycle riders. (bike condition & rider attitude etc) I'd like to continue with some aspects of road craft, specifically 'Positioning'. I.E. where you place your motor cycle on the road. (where you ride, not where you park it !!)

Most will know the basics, like staying just to the right of the centre of your lane, so that a following vehicle has to 'overtake' rather than just push past, forcing you off the edge. See diagram 1. This is not usually a problem for BMW riders, as the physical size of the bike helps you to 'own' your piece of the lane, but riders on trial, or small road bikes, can have problems.

It must be mentioned that using a bike's small size to beat the traffic by 'lane splitting' should be discouraged. Riding between lines of stopped or slowly moving traffic is dangerous as if a car door opens (known to happen !) or a car changes lanes you have no room to take evasive action. Also it tends to upset the occupants of the 'tin tops' (creating a bad attitude to riders again) and in Canberra traffic, it's just not warranted for a few seconds you might save by not waiting in line. See diagram 2.



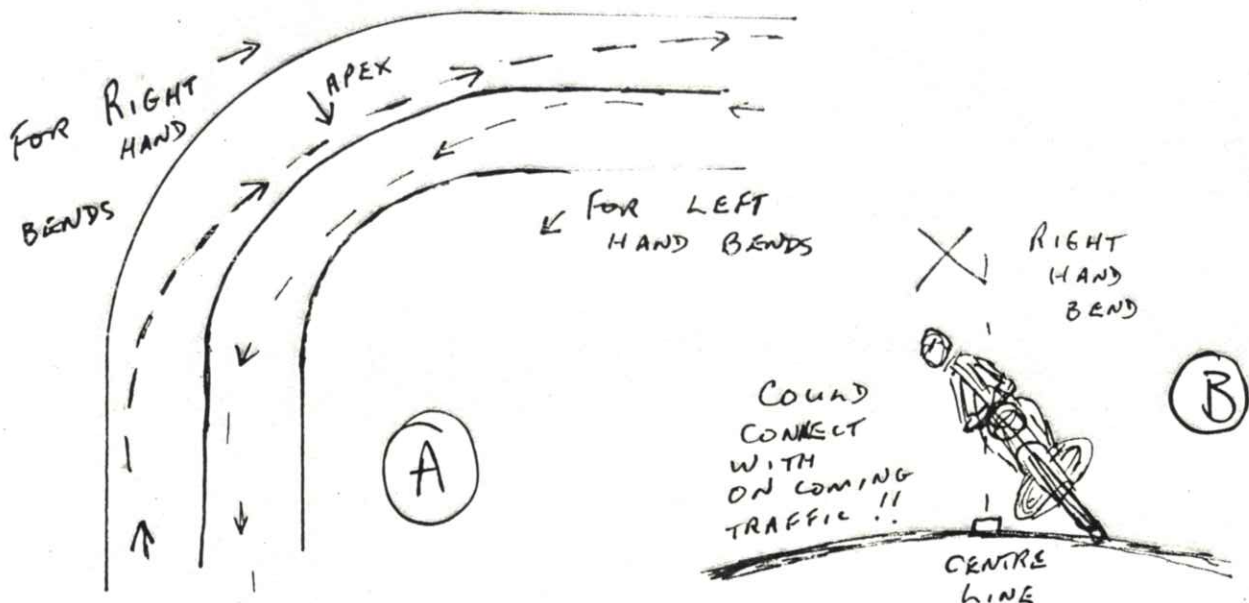
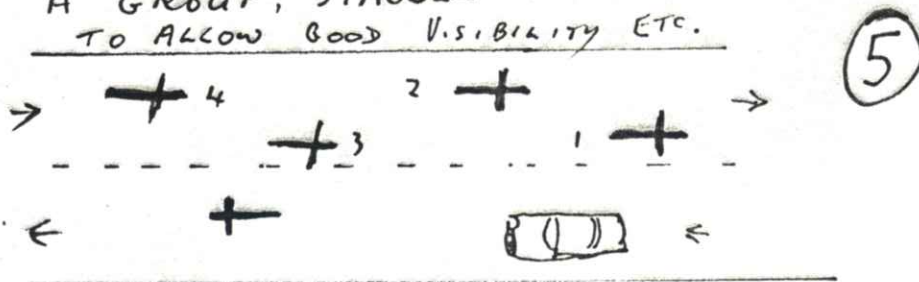
On approaching intersections where buildings are close to the roadway, care should be taken to place yourself near the centre line to improve your line of vision as in diagram 3. Bike 'A' can see, and be seen by the approaching cross traffic a lot earlier than bike 'B', even though they are both the same distance from the intersection.



continuing from previous page

At major intersections with mutiple lanes (like Belconnen Way/ Northbourne Avenue & Tuggeranong Parkway & Sulwood Drive) care should be taken to avoid oil patches at the lights and fuel spills of turning traffic. See diagram 4, bike 3 uses the 'left of centre' in lane nearest the medium strip to avoid fuel spill of right turning traffic. Next time you stop at the lights, take a good look at the roadway & see what I mean. If the roadway is wet these areas become very slippery and have caused motor cycle accidents due to lost traction while braking or cornering, so take extra care.

WHEN RIDING CLOSE IN A GROUP, STAGGER THE POSITION TO ALLOW GOOD VISIBILITY ETC.



Out of town riding on your own, or with a group brings different problems. See diagram 5. While the usual position is okay on the straight, cornering requires you to select a good 'line' on the bends, simplified in Diagram A. Take a wide entry, close to apex and wide exit (when conditions permit) and avoid braking mid bend, however do not lean over the centre line on right handers too much, or you might be collected by on-coming traffic !! (Diagram B) the same could apply for left hand bends with road side poles/ trees/ rockface etc. (Mike Houston will cover this area in depth with his 'on-road' training.)

Practice your positioning and be observant when riding, watch how others place themselves on the road and consider if it's good road craft.

'Til next time

Chris Fulker
R/80

THE R4

With its long history of flat twins and the recent introduction of its fours and triples it is sometimes forgotten that for 42 years BMW also made single cylinder motor cycles, the largest of which was the R4.

The R4 was made from 1932 until 1938 in which some 15,200 examples of five different models were manufactured.

The motor, a type M69S1 was a single cylinder, four stroke with overhead valves. It had a capacity of 398cm³ with a bore & stroke of 78 & 84mm with a compression ratio of 5.7 to 1 and gave out 12bhp at 3,500rpm. It was fitted with a governor carburettor with 3 jets and a humid air filter. There was a single disc dry plate clutch which fed power straight to a type G69 three speed gearbox with gear ratios of 2.9 to 1 for 1st, 1.5 to 1 for 2nd and 1 to 1 for 3rd. A drive shaft with spiral bevel gears gave power to the back wheel with a final drive ratio of 5.11 to 1 solo and 5.63 to 1 for sidecars.

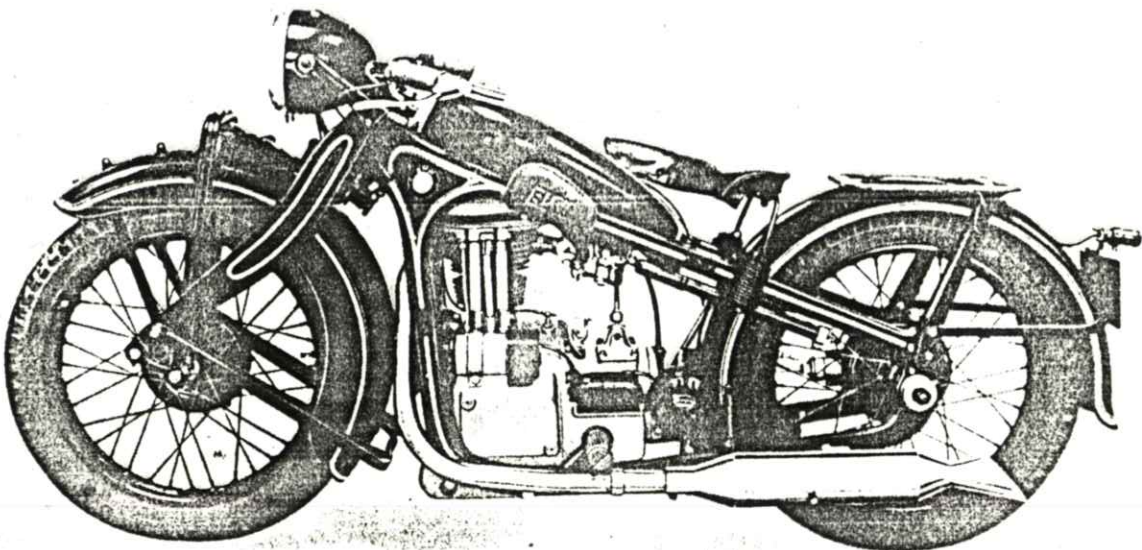
The frame, a type F69S1 was a rigid pressed steel twin loop, the front forks were trailing link with leaf springing and friction damper. The rear end was rigid. Wheels were 26inch with single leading shoes front and rear.

The R4 was 1980mm long with a height of 950mm and a width of 850mm. It weighed in at 137kg unladen. Fuel tank capacity was 12 ltr with a fuel consumption of 28 km/l. It had a range of 336 km and had a top speed of 100km/h.

In 1933 the Series 2 came out with a four speed gearbox with gear ratios of 3.6 to 1 for 1st, 2.18 to 1 for 2nd, 1.35 to 1 for 3rd and 1.1 to 1 for 4th. In 1934 the Series 3 arrived with a power increase of 14bhp at 4,200rpm. Further improvements were made in 1935 with the Series 4 and 1936 with the Series 5, the last year of its production.

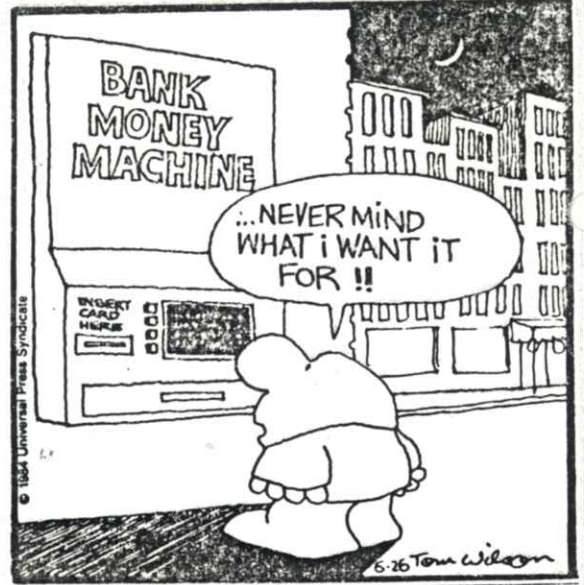
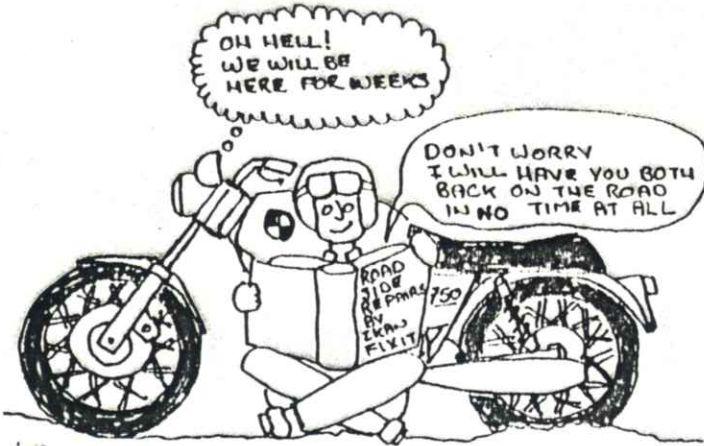
The R4 was a successful off-road machine and was used by Georg Meier in 1933 as part of the State police team. In 1937 he won the German Army Championships as part of a military team known as the Cast Irons. It was because of the R4's good off-road capability that the Army purchases were in large numbers and it became known among the Army riders as "Der Springer" (the Jumper).

Frank.



ODDS & ENDS

DEBATE between the BMW Club & Canberra District Ducati Club has been abandoned. They thought that there would be no contest and that they would win hands down. Because as we all know BMs really are the best bikes.



SIGHTED BY AN OBSERVANT CLUB MEMBER - On a recent Monday morning on Adelaide Avenue, another Club member on his red K100RS, discussing with the local constabulary the merits of BMWs ?

We wonder what the outcome was ??

CLUB PERSON OF THE YEAR - POINTS AS AT 11 FEBRUARY 1986

1.	FRANK MILLWODD	- 166	7.	JEANETTE HAHN	- 110
2.	BOB RUMSEY	- 149	8.	WARREN GILCHRIST	- 100
3.	WERNER STROTMANN	- 118	9.	FRAN GILCHRIST	- 100
4.	URSULA STROTMANN	- 118	10.	MARK COGLAN	- 98
5.	GRAÈME CAMERON	- 113	11.	LESLI CAMERON	- 97
6.	IAN HAHN	- 112	12.	HOWARD (MOFF) MOFFATT	- 90

BUMPER STICKERS WE'D LIKE TO SEE -

IT'S HARD TO BE HUMBLE WHEN YOU RIDE A BMW.

I'D RATHER BE RIDING A BOXER TWIN, THAN A BOX'A BOLTS.

I'D RATHER BE TOURING (ON MY BMW)!

BMW Motorcycle Club of Victoria (Inc.)
K75 Raffle

This raffle is the Club's major fundraising event of 1986. To be successful it needs your support. We have a very impressive list of prizes on offer and we must be certain to sell all of our 6,000 tickets in order to make our efforts worthwhile and to maximise the benefit we, as a Club, will get from the proceeds.

The prizes are as follows:

- First Prize: BMW K75C Motorcycle on European delivery: Return economy air fare to W. Germany and a 4-day motorcycle tour of Austria, including accomodation and meals.
- Second Prize: BMW R65 Motorcycle.
- Third Prize: BMW System Helmet.
- Fourth Prize: BMW Rain Suit.
- Fifth Prize: BMW Multivario Tank Bag.
- Sixth Prize: BMW Leather Gloves.
- Seventh and Eighth Prizes:
12 months subscription to Australian Motorcycle News.

As happened in the previous raffle, we are asking all of you to help sell tickets by sending in the form we have attached and requesting some tickets which you can sell around your friends and workmates. Please avoid asking for more tickets than you can sell. If you take some and then run out, we can easily send you some more, when you return the completed ticket stubs and payment for the first batch you sell. Please do not send cash in the mail. Instead, make postal orders or cheques payable to "BMW K75 Raffle". To give you some reward for your efforts, there will be a prize for the person selling the most tickets - a BMW System Helmet.

Tickets officially go on sale from 1st February to 1st April. However, we are distributing tickets well in advance, and there is no reason why orders cannot be taken at this stage.

Please fill out the form overleaf (leaving the ticket numbers blank for us to fill in) and return it to the Club's address using the envelope provided. If no envelope is available, please address an envelope and mark it "K75". Be sure to sign the form as indicated.

The raffle closes on 1st April and will be drawn by a representative from BMW Australia, at the Club's 1986 Rally site at Zumstein's National Park, near Halls Gap, Victoria, at 2.00 p.m. The results will be in The Age newspaper on 3rd May 1986. Permit for the raffle was granted by the Raffles and Bingo Permits Board on 20th November 1985.

I hope you can help out. Ride Safely.

Alf McMillan

Alf McMillan. (K100)

Note: ACT BMW MCC
is purchasing
two books of 20 tickets,
please contact
Committee members
if interested.

Editor

REMINDER REMINDER REMINDER REMINDER REMINDER REMINDER REMINDER

Next month (March 10) is the Annual General Meeting and there are a few points that members should keep in mind about this meeting.

1. Only current financial members will be able to vote in the elections for the new committee. This means that you must pay the 1986/1987 fees prior to the election.
2. In order for the AGM (and elections) to proceed there must be 25% of the financial membership present, so please make an effort to turn up.
3. Nominations for committee positions may be presented, in writing, to the Secretary prior to the AGM and must be signed by the proposer, seconder and the nominee. All must be financial members. Nominations may also be accepted at the AGM provided that the proposer, seconder and nominee are all present.
4. Proxy votes may be accepted from financial members and must be in writing and signed by both the proxy and member concerned.
5. Notices of motion to change any aspect of the Constitution may be presented at the AGM and will require a 2/3 majority vote to be passed.

As financial members your interest and participation in the AGM is essential and you should consider nominations for the Committee positions outlined below.

PRESIDENT

The President is required to chair the General Meetings and oversee the operation of the Committee and the Club from both a business and social point of view and may be required to act as spokesperson for the Club.

VICE PRESIDENT

Assists and deputises for the President. May be required to chair meetings.

SECRETARY

Required to keep Minutes of general and committee meetings, attend to correspondence and keep track of Club property.

TREASURER

Required to keep track of Club finances, collect and pay monies and keep financial records in appropriate order.

SOCIAL SECRETARY

Organises social meetings and runs as necessary.

EDITOR

Required to compile and arrange typing, layout and printing of the monthly Journal.

RALLY COORDINATOR

Required to organise official Club runs and keep track of motorcycle rallies and other events for the information of Club members. Will also be required to oversee the running of the 1986 Kosciusko Rally.

A.C.T. BMW
MOTOR CYCLE CLUB
P.O. BOX 1042
WODEN A.C.T. 2606

ACT BMW MCC LIBRARY